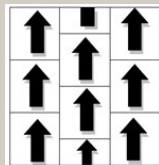
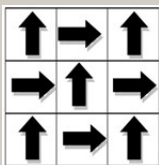




ESHER



Recommended Installation Method



This design can produce the “double black” effect at the join between two particular tiles. This can be minimised by the careful selection of two adjacent tiles. We do not recommend laying in monolithic as this can pronounce the effect. This is not a manufacturing fault.

Specifications

Construction	Multi Level Tufted Loop Pile
Face fibre	100% Sunylon recycled nylon BCF
Dye method	100% Solution dyed
Tufting gauge	1/10"
Pile weight	745 g/m ² (22 oz/sq.yd)
Pile height	4mm
Backing material	EnviraSoft™ A cushion back
Backing thickness	4mm
Tile size	50cm X 50cm (9.5mm overall thickness)

Performance

Electrostatic properties	CNS 13595 10≤2.0kV 20% R.H. 70°F
Flammability	BS 4790: Hot Metal Nut, Method 1 Pass
Radiant Heat Source	AS ISO 9239.1.2003.CHF 5.2 kW/m ²
Wear Classification	Contract Extra Heavy Duty

Acoustic Behaviour (EnviraSoft™)

Sound absorption	EN ISO 354 and EN ISO 11654
Average coefficient (α _w)	0.41 (H)